



**YOUR SAFETY,  
OUR PRIORITY.**



# Company Overview

Radius has been dedicated to provide better solutions to the industry through diverse businesses. We are successful in bringing innovative, reliable and qualitative services.

At Radius, we have the caliber to canvas your imaginations in to the real world of technology and luxury.

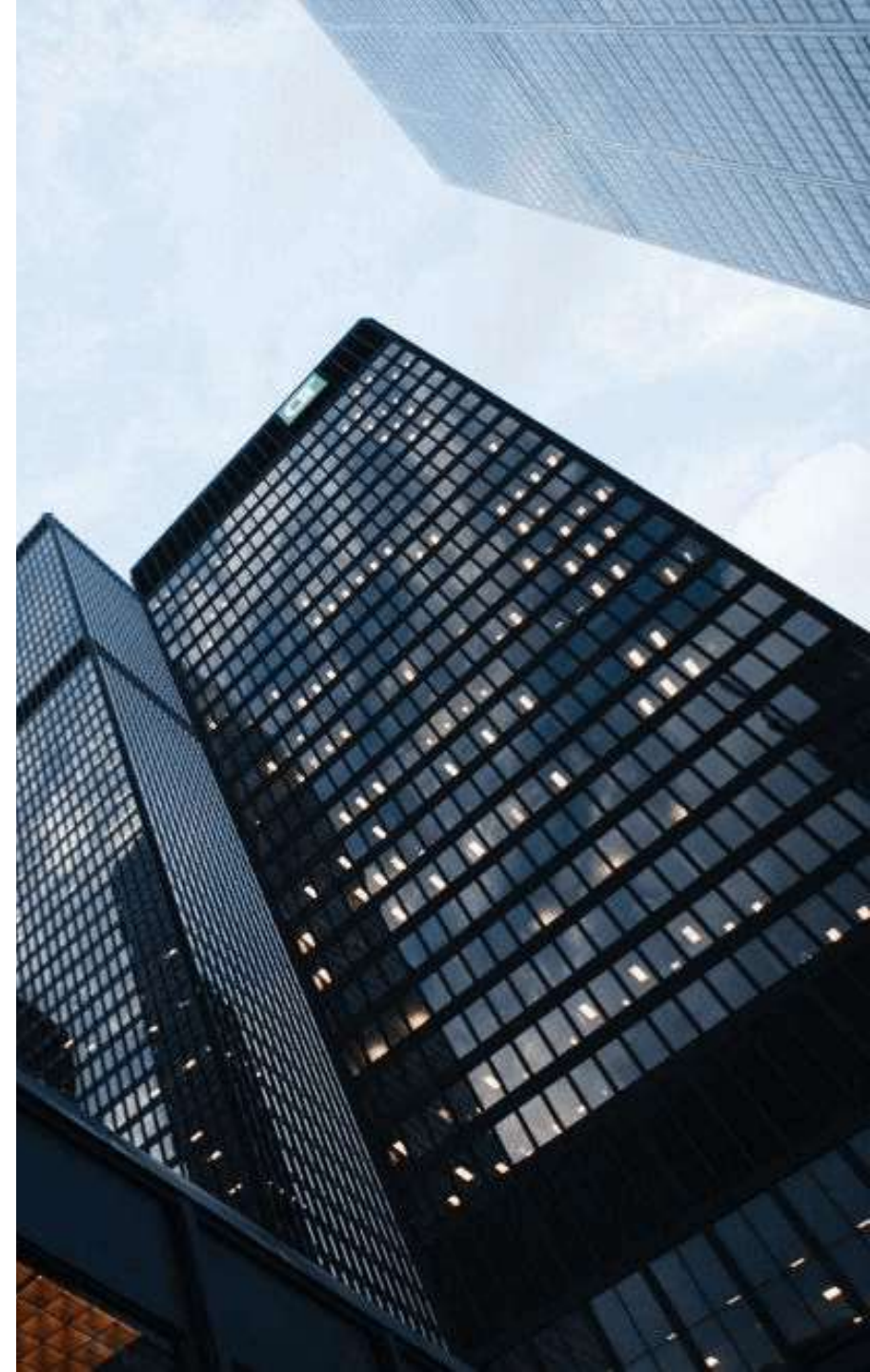
Established:  
**2007**

Certified: ISO  
9001 & ISO  
27001

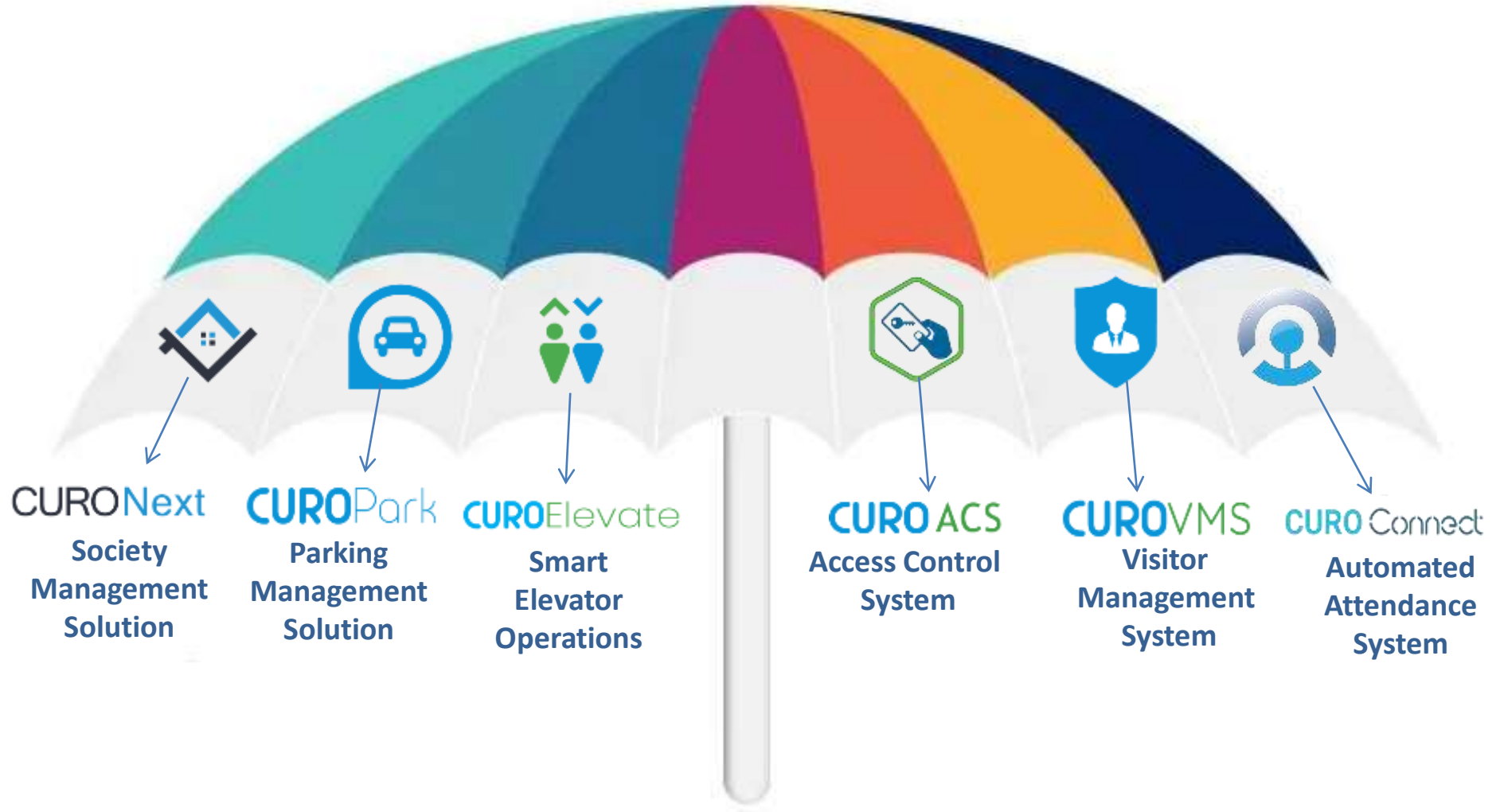
More than  
**15+ Years** in  
field of  
Technology &  
Innovation

Authorized  
Service  
Partner:  
**MAGNETIC**

Authorized  
Distribution  
Partner:  
**NOVUS,  
BOSCH, DAHUA**



# CUROSuit Products





# Comprehensive Security Solutions for Diverse Needs for Residential

## 1. Electronic Security and Surveillance Systems :

Advanced surveillance technology ensuring comprehensive security and real-time monitoring.

## 2. Fire Alarm Systems :

Immediate fire detection and alarm systems for quick response and safety.

## 3. Parking Management Systems:

Efficient and organized parking solutions for smooth operations

## 4. Visitor Management Systems:

Streamlined visitor tracking and management for enhanced security.

## 5. Intercom Systems:

Reliable communication infrastructure for seamless internal communication.

## 6. Video Door Phones (VDP)

Enhanced security with visual verification at entry points.



## 7. Pedestrian Access Control Systems :

Secure access management for pedestrian entry points.

## 8. Elevator Access Control Systems:

Controlled access within buildings for added security.

## 9. Panic Alarm Systems:

Emergency alert systems for immediate response to threats.

## 10. Hot Line Systems

Dedicated communication lines for critical situations.

## 11. Digital Access Control Systems

Secure and efficient access control solutions for various needs.

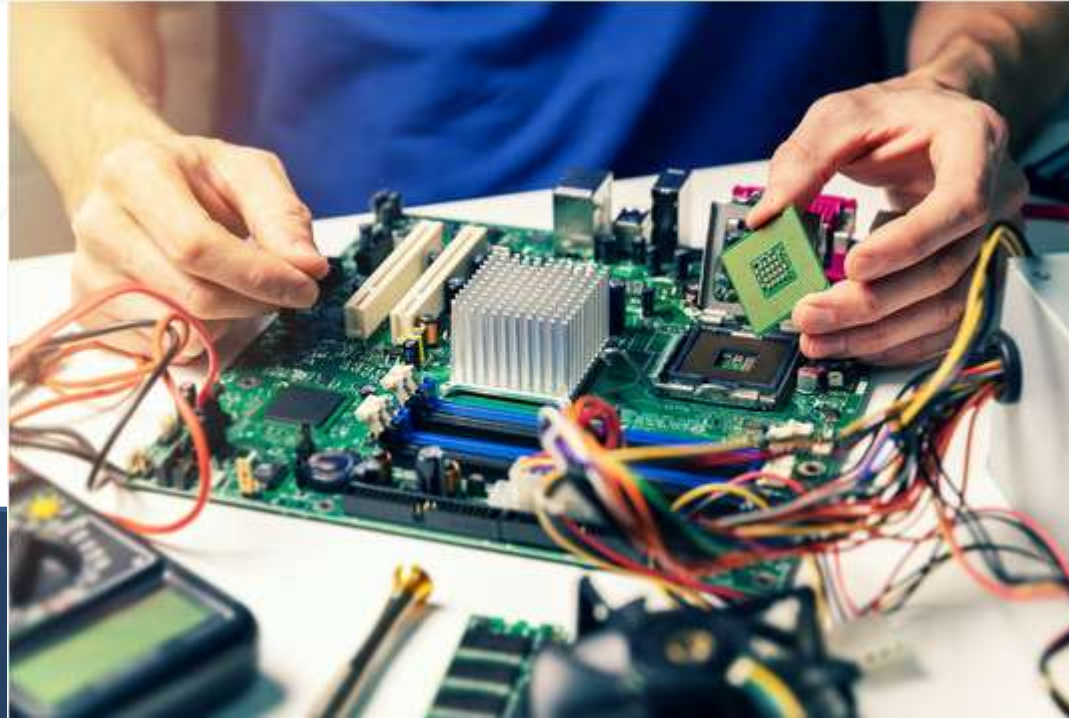
## 12. Network Management Systems (NMS):

Centralized management and monitoring of network infrastructure.

## 13. Residential Gateway:

Integrated solutions for managing and securing residential communities.

# HARDWARE



## Solutions For Residential





**Boom Barrier**

- Automated access control for vehicle entry and exit.
- Robust and reliable for secure residential gates.



**Flap / Turnstile / Swing Gate**

- Versatile gate options for controlled access and security.
- Suitable for high-traffic areas and residential entrances.



**CCTV**

- High-definition surveillance for enhanced security.
- Real-time monitoring and recording capabilities



**Fire Alarm**

- Early detection and alert system for fire safety.
- Ensures prompt response and compliance with safety standards.



**SIP Server**

- Centralized system for managing VoIP communications.
- Enhances connectivity and integration with other devices.



**VDP (Video Door Phone)**

- Video and audio communication with visitors at the door.
- Enhances security and convenience for residential properties.





## **Commercial Security and Management Solutions**



# Commercial Security and Management Solutions



## 1. Electronic Security and Surveillance Systems:

Comprehensive surveillance solutions for real-time monitoring and enhanced security.



## 2. Fire Alarm Systems:

Advanced fire detection and alarm systems for immediate response and safety.



## 3. Parking Management Systems:

Efficient and streamlined parking solutions for commercial facilities.



## 4. Parking Guidance Systems:

Intelligent guidance systems to optimize parking space usage and improve traffic flow.



## 5. Visitor Management Systems:

Effective visitor tracking and management for secure and organized operations.



## 6. Intercom Systems:

Robust intercom solutions for clear and reliable communication within the facility.



## 7. Pedestrian Access Control Systems:

Secure and efficient access control for pedestrian entry points.



## 8. Elevator Access Control Systems:

Controlled access within buildings to enhance security and manage access rights.



## 9. Digital Access Control Systems:

Advanced digital access control solutions for secure and convenient access management.



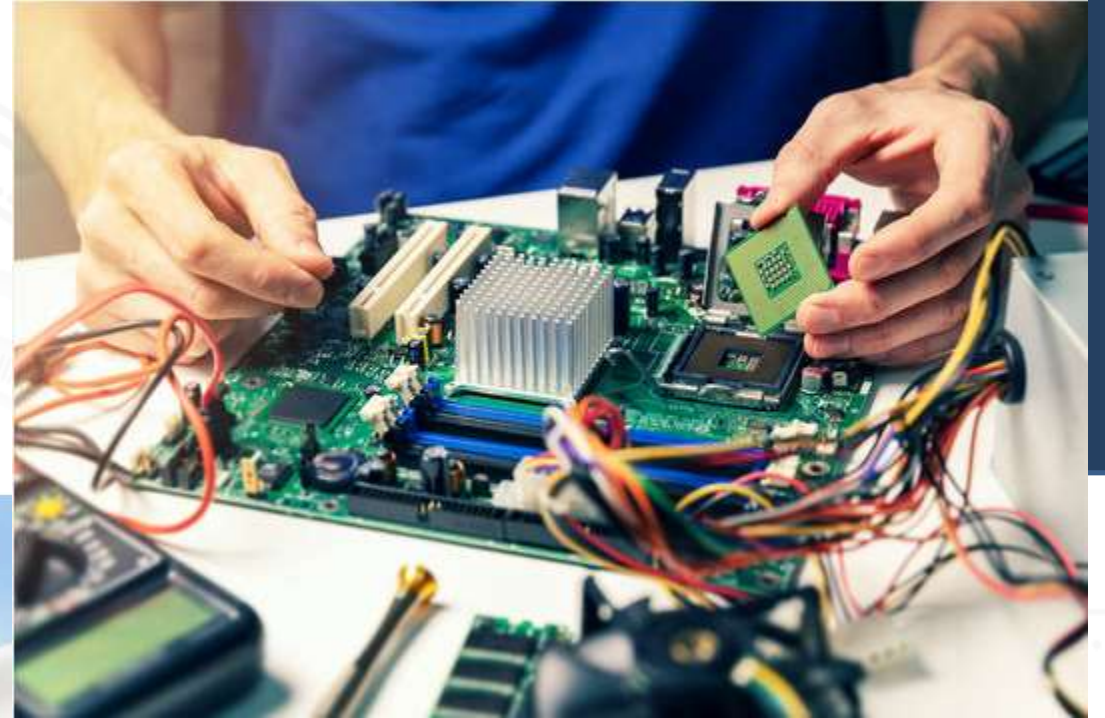
## 10. Network Management Systems (NMS): -

Centralized monitoring and management of network infrastructure for optimal performance and security.



# HARDWARE SOLUTION

Commercial





**Boom Barrier**

- Automated access control for vehicle entry and exit.
- Robust and reliable for secure residential gates.



**Flap / Turnstile / Swing Gate**

- Versatile gate options for controlled access and security.
- Suitable for high-traffic areas and residential entrances.



**DFMD / HHMD (Door Frame Metal Detector / Handheld Metal Detector)**

- Comprehensive metal detection for enhanced security.
- Ensures safety by screening for prohibited items.



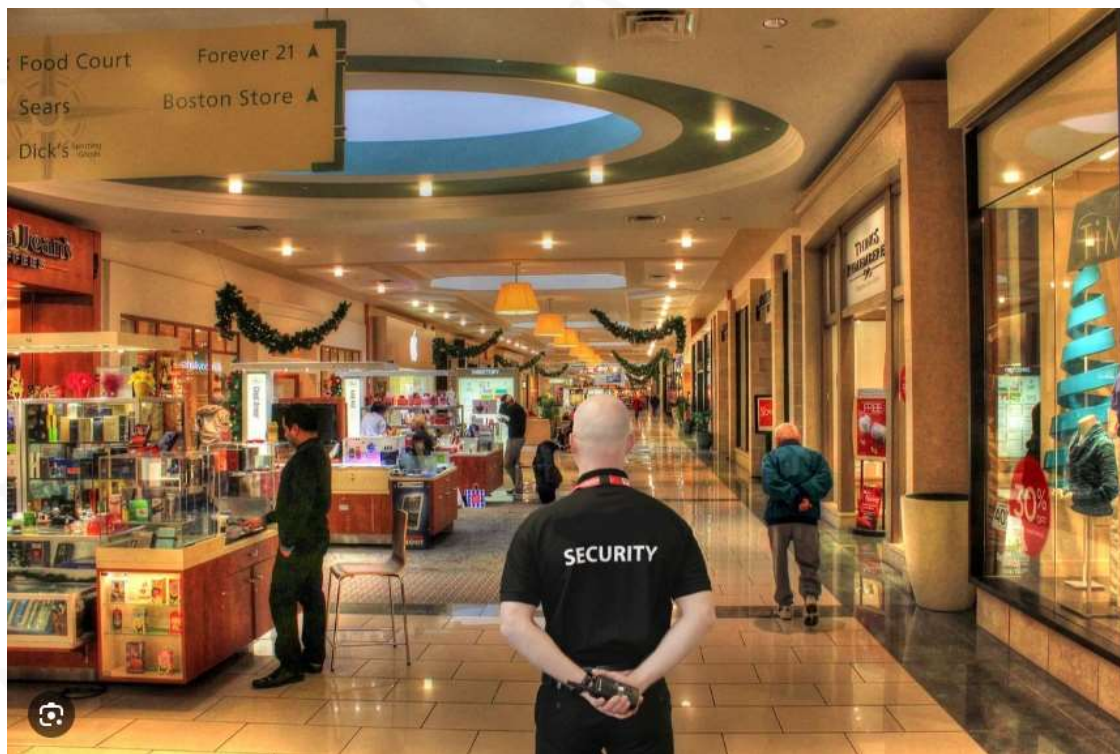
**X-Ray Baggage Scanner**

- High-resolution scanning for thorough baggage inspection.
- Detects concealed items and enhances security protocols.



**SIP Server**

- Centralized system for managing VoIP communications.
- Enhances connectivity and integration with other devices.



## Retail and Mall Security and Management Solutions



# Retail and Mall Security and Management Solutions



## Electronic Security and Surveillance Systems

Comprehensive surveillance solutions tailored for retail and mall environments to ensure real-time monitoring and enhanced security.



## Fire Alarm Systems

State-of-the-art fire detection and alarm systems designed to provide immediate alerts and enhance safety measures.



## Intercom Systems

Reliable and efficient intercom solutions to facilitate clear communication within retail and mall spaces.



## Parking Management Systems

Efficient parking management solutions to streamline parking operations and enhance customer experience.



## Parking Guidance Systems

Efficient parking management solutions to streamline parking operations and enhance customer experience.



## Paid Parking Solutions

Integrated paid parking systems to manage parking fees and optimize revenue generation.



## Digital Access Control Systems

Advanced digital access control solutions to ensure secure and convenient access management for staff and visitors.

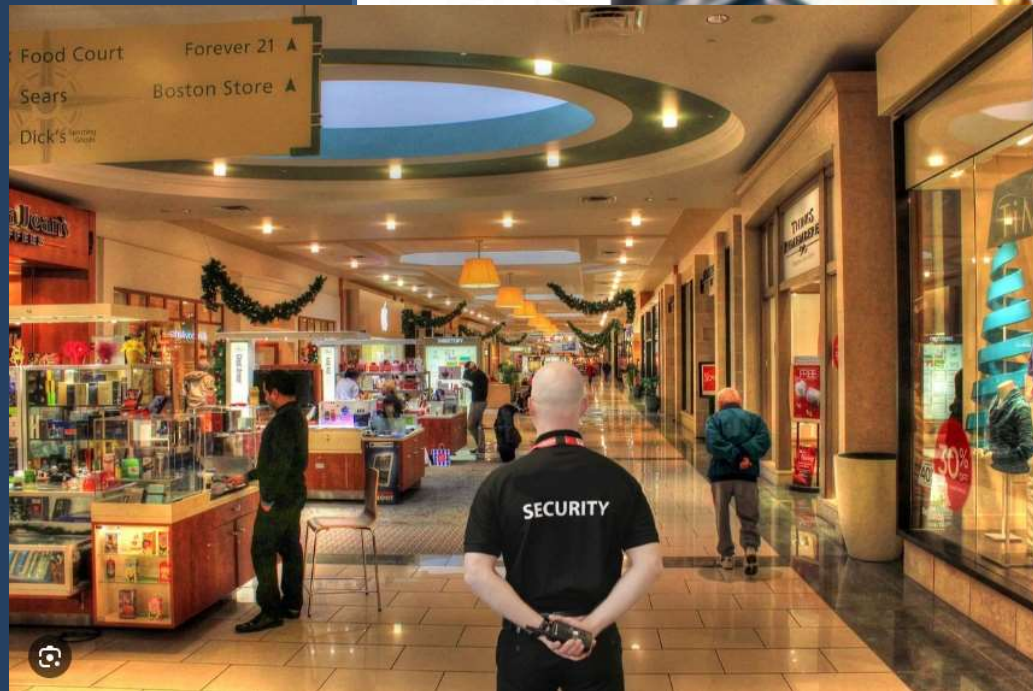
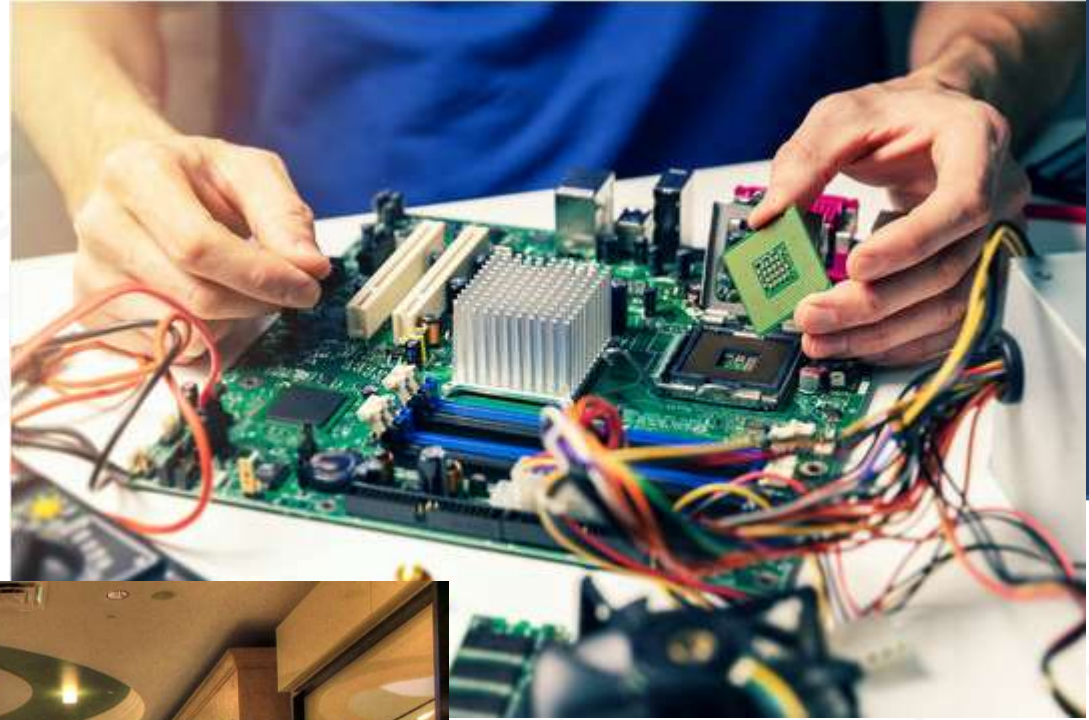


## Network Management Systems (NMS)

Centralized systems to monitor and manage network infrastructure, ensuring optimal performance and security.

# HARDWARE SOLUTION

## Retail and Mall





**Boom Barrier**

- Controls vehicle access and ensures secure parking areas.
- Ideal for managing customer and staff entry points.



**Flap / Turnstile / Swing Gate**

- Provides secure and efficient pedestrian access control.
- Enhances flow and security at mall entrances and retail areas.



**DFMD / HHMD (Door Frame Metal Detector / Handheld Metal Detector)**

- Ensures safety with comprehensive metal detection at entry points.
- Prevents the entry of prohibited items into retail spaces.



**X-Ray Baggage Scanner**

Thorough inspection of bags and packages for security.  
Detects concealed items to protect against potential threats.



# Education Vertical Security and Management Solutions

# Education Vertical Security and Management Solutions

## Electronic Security and Surveillance Systems:

Comprehensive surveillance systems to ensure safety and security within educational institutions, providing real-time monitoring and alert mechanisms.



## Fire Alarm Systems:

Advanced fire detection and alarm systems designed to protect students, staff, and property by offering immediate alerts and response capabilities.



## Digital Access Control Systems:

Cutting-edge digital access control solutions to manage and secure entry points across campus, ensuring authorized access and heightened security.



## Student Access Management and Control Systems:

Efficient systems to monitor and manage student access, attendance, and movements within the institution, enhancing overall safety and operational efficiency.



## Intercom Systems:

Reliable intercom solutions to facilitate clear and effective communication across various departments and buildings within the educational institution.



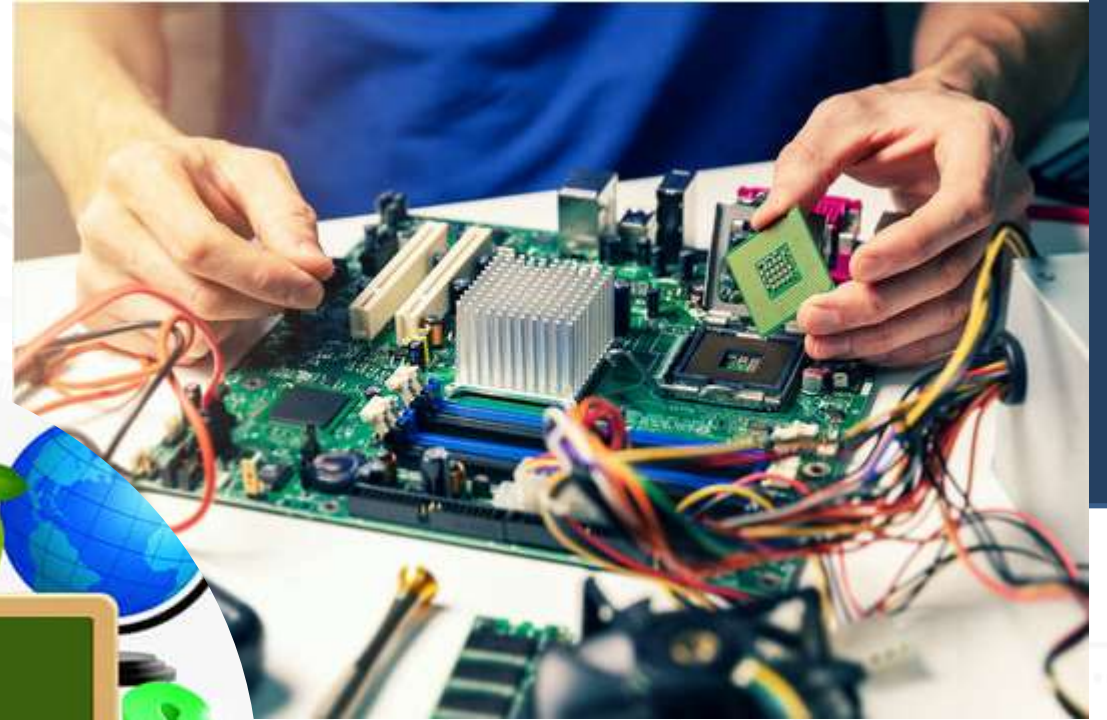
## Network Management Systems (NMS):

Centralized systems to oversee and manage the network infrastructure, ensuring robust performance, security, and connectivity.



# HARDWARE SOLUTION

## Education Management







### **Boom Barrier**

- Manages vehicle access to school and campus areas.
- Enhances security for student drop-off and pickup zones.



### **Flap / Turnstile / Swing Gate**

- Controls entry and exit points for students and staff.
- Ensures smooth and secure access to educational facilities.



### **DFMD / HHMD (Door Frame Metal Detector / Handheld Metal Detector)**

- Provides comprehensive metal detection at school entrances.
- Enhances safety by screening for prohibited items.



### **X-Ray Baggage Scanner**

- Inspects bags and packages to ensure security on campus.
- Detects concealed items, safeguarding against potential threats.



## **Hospitality Segment Security and Management Solutions**

# Hospitality Segment Security and Management Solutions



## 1. Electronic Security and Surveillance Systems:

Advanced surveillance systems tailored for hospitality environments, ensuring guest safety and monitoring critical areas in real-time.



## 2. Fire Alarm Systems:

State-of-the-art fire detection and alarm systems designed to promptly alert staff and guests, providing quick response capabilities to enhance safety.



## 3. Elevator Access Control Systems:

Secure access control for elevators, restricting entry to authorized personnel and guests to ensure safety and privacy within the premises.



## 4. Digital Access Control Systems:

Cutting-edge digital solutions for managing access throughout the hotel, ensuring only authorized individuals can enter specific areas, enhancing overall security.



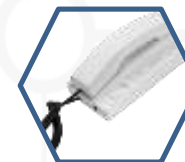
## 5. Parking Management Systems:

Efficient parking solutions designed to manage guest and staff parking, optimizing space usage and providing seamless access control.



## 6. Integrated Hotel Room Services using RG:

Innovative room services integration utilizing RG (Residential Gateway) to offer guests enhanced in-room service options, improving overall guest experience.



## 7. Intercom Systems:

Reliable intercom solutions to facilitate clear and effective communication between hotel staff, improving operational efficiency and guest service.



## Network Management Systems (NMS):

Comprehensive systems to manage and monitor the hotel's network infrastructure, ensuring robust performance, security, and connectivity.

[www.radiusinfotech.com](http://www.radiusinfotech.com)





# HARDWARE SOLUTION

## Hospitality Segment





### Boom Barrier

- Streamlines vehicle access for guests and staff.
- Enhances security and convenience at hotel entrances and parking areas.



### Flap / Turnstile / Swing Gate

- Provides secure and efficient access control for guest and staff areas.
- Enhances flow and safety at entry points.



### DFMD (Door Frame Metal Detector)

- Ensures safety by detecting metal objects at building entrances.
- Prevents prohibited items from entering the premises.



### X-Ray Baggage Scanner

- Thoroughly inspects bags and luggage for security.
- Detects concealed items to enhance guest safety.



### Bollard / Tyre Killer

- Protects against unauthorized vehicle access and potential threats.
- Ensures security at critical entry points and sensitive areas.



## **Government Vertical Solutions**



# Government Vertical Solutions



## 1. Electronic Security and Surveillance System

- High-resolution cameras for comprehensive monitoring.
- Real-time alerts and integrated data analysis.



## 2. Fire Alarm System

- Reliable detection and automated alerts for quick response.
- Ensures compliance with all safety regulations.



## 3. Digital Access Control System

- Secure management with remote access and monitoring.
- Seamlessly integrates with existing security infrastructure.



## 4. Parking Management System

- Efficiently manages parking resources and availability.
- Automated fee collection and comprehensive reporting.



## Parking Guidance System

- Intelligent guidance to optimize parking and reduce congestion.
- Real-time updates and dynamic signage for improved user experience.



## Visitor Management System

- Streamlined check-in and tracking with enhanced security.
- Real-time visitor data and detailed reporting.

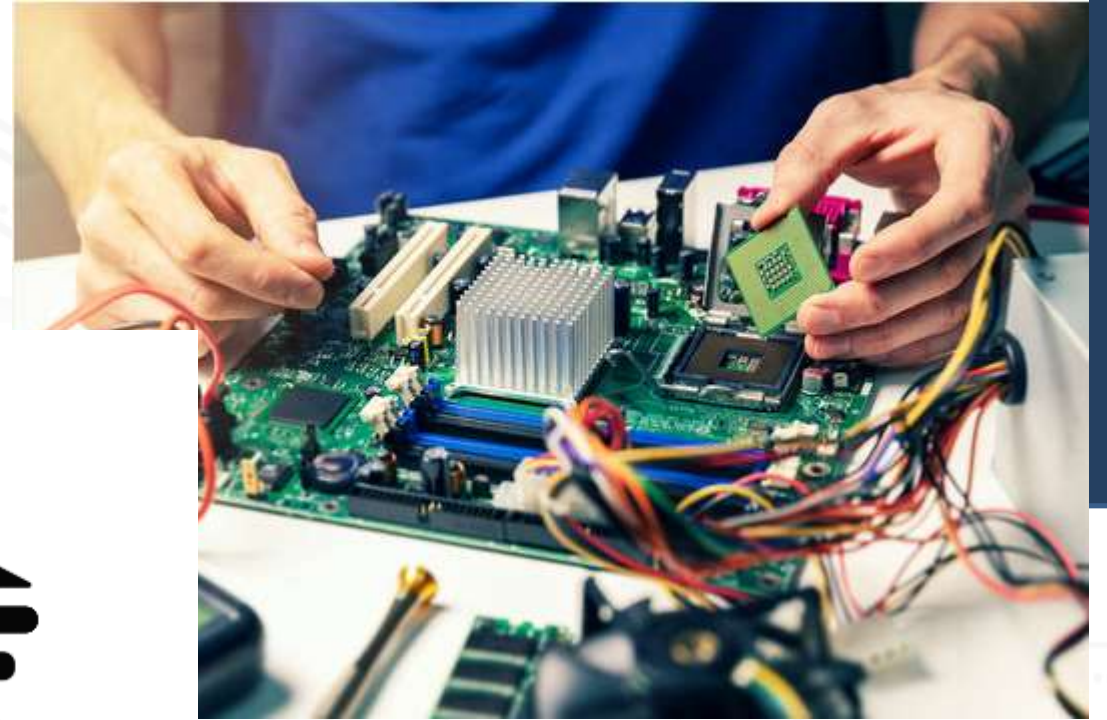


## 7. Intercom System

- High-quality audio and video communication capabilities.
- Integrates with security systems for comprehensive coverage.

# HARDWARE SOLUTION

## Government





### Boom Barrier

- Manages vehicle access to secure government facilities.
- Enhances control at entry and exit points.



### X-Ray Baggage Scanner

- Inspects bags and packages for hidden threats.
- Ensures comprehensive security for government premises



### Flap / Turnstile / Swing Gate

- Provides secure and efficient pedestrian access.
- Suitable for high-security areas and government buildings.



### Bollard / Tyre Killer

- Protects against unauthorized vehicle access and potential attacks.
- Secures critical entry points and sensitive areas.



### DFMD (Door Frame Metal Detector)

- Detects metal objects to ensure safety at entrances.
- Prevents entry of prohibited items and enhances security.



## Banking Sector Hardware Solutions



**DFMD (Door Frame Metal Detector)**

- Ensures secure entry by detecting metal objects.
- Enhances protection against theft and unauthorized items



**X-Ray Baggage Scanner**

- Provides thorough inspection of bags and briefcases.
- Detects concealed items to safeguard against potential threats.

The background of the slide features a low-angle photograph of a modern skyscraper with a glass facade, reaching towards a clear blue sky. The image is partially obscured by dark blue diagonal geometric shapes. Faint, light gray technical drawings, including a circular diagram with triangles and various lines, are overlaid on the right side of the slide.

# THANKYOU

[WWW.RADIUSINFOTECH.COM](http://WWW.RADIUSINFOTECH.COM)

[INFO@RADIUSINFOTECH.IN](mailto:INFO@RADIUSINFOTECH.IN)